

# DLCM for Research Data Governance

## *Swiss National Initiative*

---

Basma Makhlouf Shabou, PhD  
Information Science Dept. Geneva School of Business Administration  
University of Applied Sciences and Arts Western Switzerland

*ALA-ICA Conference, Mexico City, 28 November 2017*

h e g

Haute école de gestion  
Genève



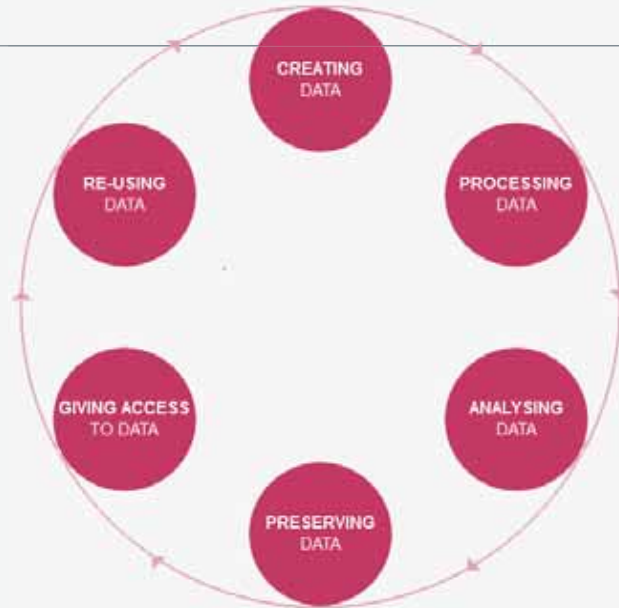
DLCM

swissuniversities

**Hes**·SO  
Haute Ecole Spécialisée  
de Suisse occidentale



# Considerations ...



UK Data Archive « Research Data Life-Cycle », 2015

## Research Data Lifecycle Management

Processing of the entire information derived from the research activities during its whole life cycle ...

### Audience profile

Researchers and teams, Research head & Research administrators, research assistants, Students, Information professionals, consultants



## DLCM project

- As a National Service
- Needs Exploration : Main Results
- Objectives

## Consulting, Training and Teaching in DLCM

- Objectives & deliverables
- Illustration of implemented services : DLCM Coordination Desk



# DLCLM

Research Data  
Management Hub

2015-2018

~10 mio

*Swiss Universities, P5  
programme*

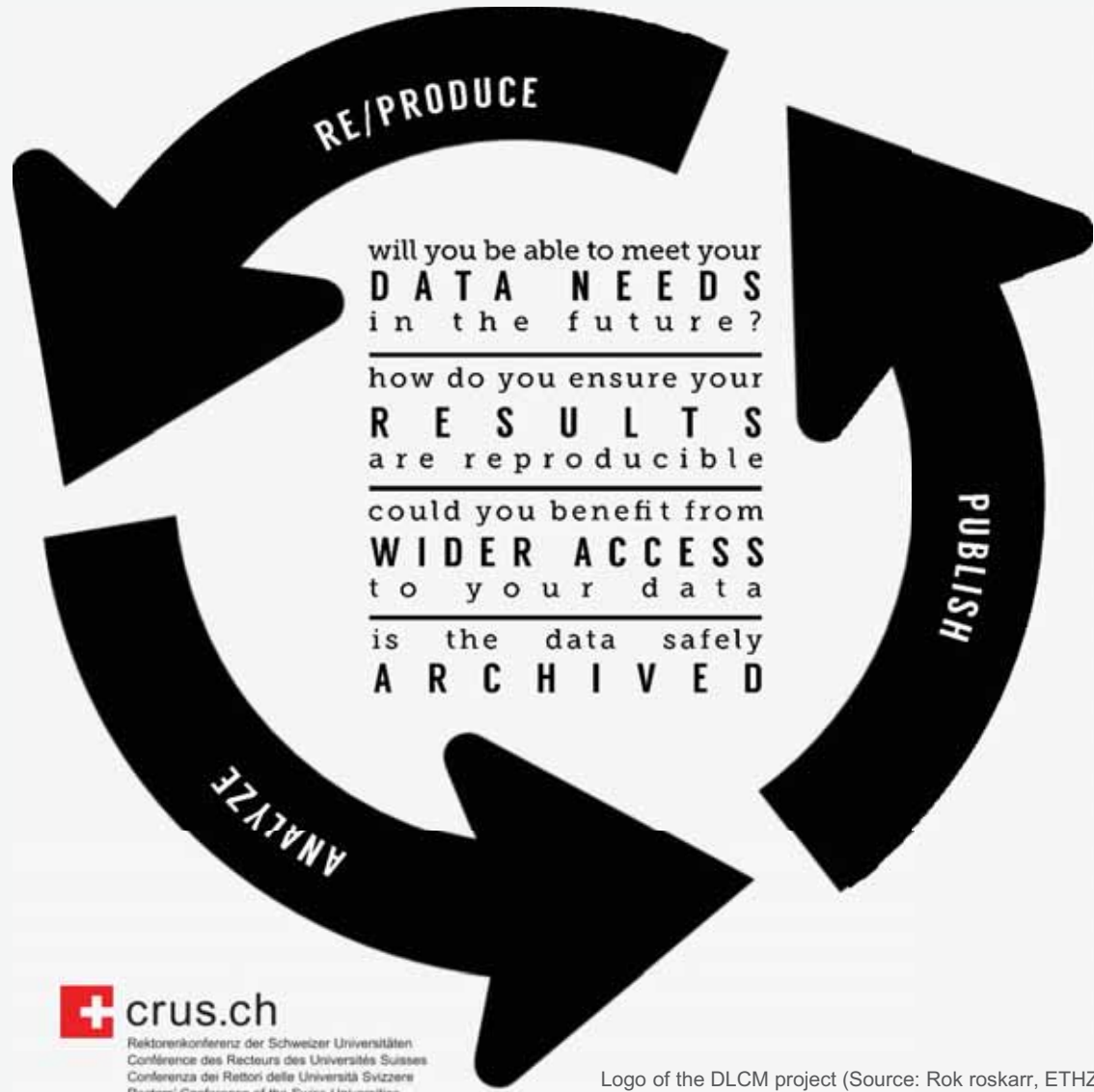


<https://www.swissuniversities.ch/fr/organisation/projets-et-programmes/p-5/projets-en-cours/>



# DLCM Project as a National Service

## 2015-2018



Logo of the DLCM project (Source: Rok roskarr, ETHZ)



# Needs Exploration : Main Results



49 interviews

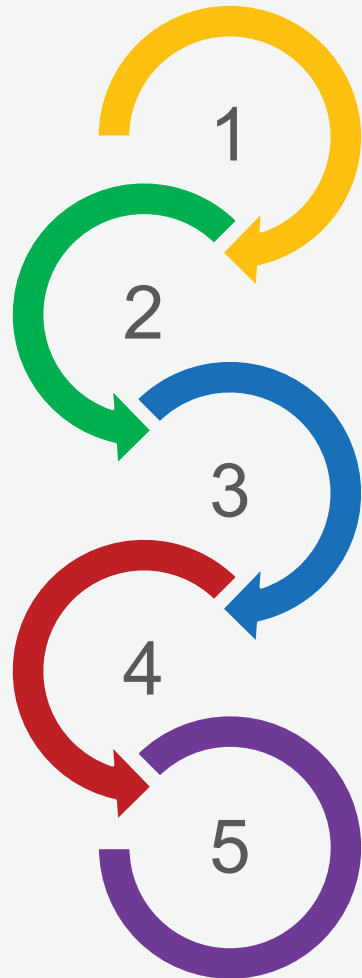


30 disciplines



6 institutions

Source : P-Y Burgi, 2016



**Guidelines, Policies, and Data Management Plan (DMP)**

**Active Data Management**

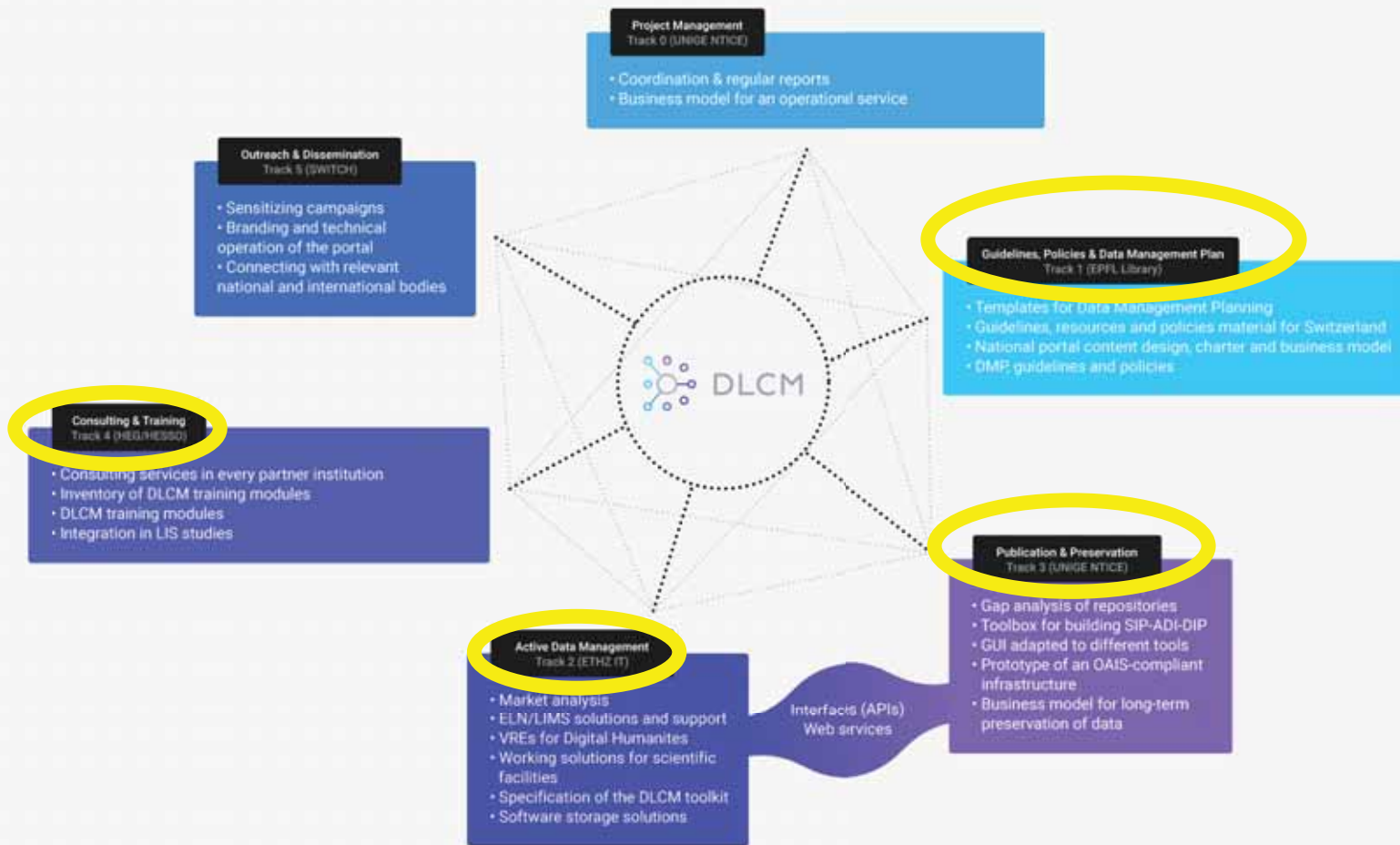
**Preservation and Publication**

**Consulting, Training and Teaching**

**Project Outreach**



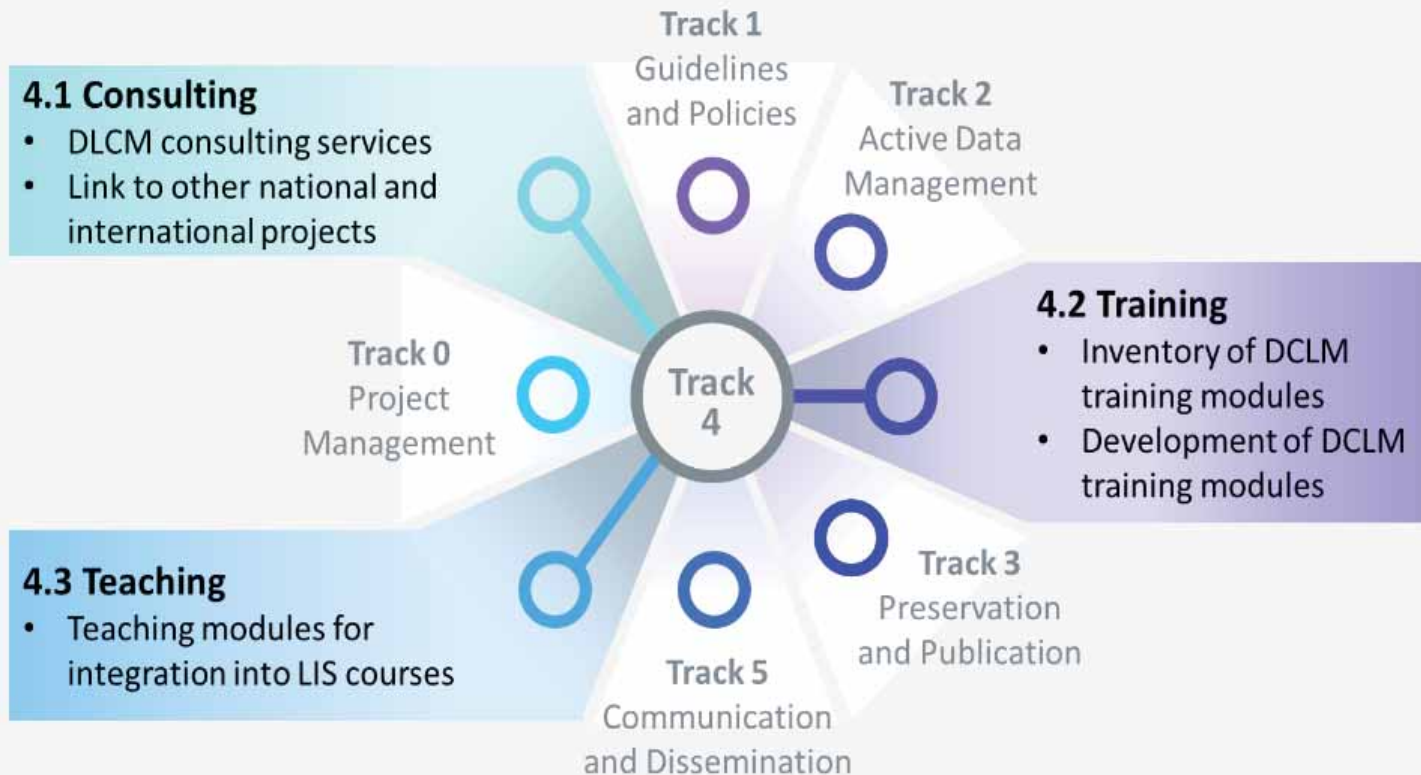
# Tracks & Deliverables







# Track 4: Consulting, Training and Teaching





## Consulting Services

- Development of **use-cases**
- Implementation of **consulting** services within partner institutions
- Set up of a **national coordination desk**



## Training Modules

- Conception of general training **modules catalog**
- Development of specific **training modules**



## Teaching Modules

- **Teaching module** creation and integration into the optional information governance' module of HEG Master in Information Sciences (in 2017)



## How it works ? Workflow researcher request processing ...

- Access to DLCLM portal [dlcm.ch](http://dlcm.ch)
- Contact **Coordination Desk DLCLM**
  - Focal point in your institution
    - provide needed information with customised support
    - expert referral :
      - Training
      - Consulting
- Request management
  - "support desk"
  - knowledge based services





# Performed pilots ...



Data Life Cycle  
Management

Resources

Training

Teaching

Consulting

DLCM Expert Institutions

DLCM Consulting Expertise

About us

News & events

mandated by  
swissuniversities

2017 copyright DLCM - Webdesign by Apptitude

Search

## DLCM Consulting Expertise

Map of DLCM partner Units offering consulting expertise in Switzerland

Filter overlay:

- Legal  
UNITS OFFERING LEGAL ADVICES
- DMP  
UNITS OFFERING ADVICES ON DMP
- Data Processing  
UNITS OFFERING DATA PROCESSING...
- IT  
UNITS OFFERING IT ADVICES
- Data Security  
UNITS OFFERING DATA SECURITY A...
- Data Preservation

Institution	Unit	Physical address
École polytechnique fédérale de Lausanne (EPFL)	SISB - Information scientifique et bibliothèques	EPFL Bibliothèque Rolex Learning Center Station 20 1015 Lausanne

**Hes-so**  
Haute école spécialisée de Suisse occidentale  
University of Applied Sciences and Arts Western Switzerland

Etudier | Domaines | Enseigner | Recherche | International | Hes-so en bref

Recherche > Recherche R&D > Appel à la recherche > Domaines de la recherche

### DONNEES DE LA RECHERCHE

En réponse aux besoins de la communauté de recherche, la HES-SO propose de nouveaux services facilitant la gestion des données de la recherche.

**LIENS**

- PROJET DLDM
- POSSIBILITES DE FORMATION

**CONTACT**

dcm@hes-so.ch

**DLCM**  
Research Data Management Hub

Au cours de leur expérience professionnelle, les chercheurs et chercheurs, professionnels de l'information, administrateurs et administratrices sont amenés à collecter, créer, stocker, sécuriser, archiver, partager, maintenir, publier des données de recherche.

Afin de les accompagner tout au long du cycle de vie de leurs données de recherche, la HES-SO propose les services suivants:

- un service d'information et d'orientation sur les différents usages de la gestion des données de la recherche
- des catalogues d'institutions et d'experts à même d'aider les chercheurs dans leurs démarches
- des opportunités de formations.

Ces services sont le fruit d'une collaboration avec le Réseau de la Genève, dans le cadre du projet national DLDM dans le contexte d'une phase pilote jusqu'en juillet 2018.



# In short ...

The DLCM project offers to researchers the opportunity to exchange valuable materials, tools, methods, infrastructure to be able to acquire the needed knowledge for managing research data from the creation to disposition and the preservation of those data.

It shows how we can extend the life our research data to be shared properly, used and re-used for high exploitability...

It helps developing knowledge and expertise to establish good practices needed for Open science...

It help considering ethical and methodological of scientific research processes

It provides a significant support for researcher to comply funders requirements !

**key** *For that training, consulting and teaching remains the services in research data management*



## Read more ...

- DLCM Project, 2016: [dlcm.ch](http://dlcm.ch)
- Pierre-Yves Burgi, Eliane Blumer & Basma Makhoulf-Shabou (2017). Research data management in Switzerland: National efforts to guarantee the sustainability of research outputs.. IFLA, Numéro spécial <http://journals.sagepub.com/doi/full/10.1177/0340035216678238>
- Pierre-Yves Burgi, Eliane Blumer, Basma Makhoulf-Shabou & Lydie Echernier (2016). DLCM : une approche globale pour une meilleure gouvernance du cycle de vie des données de la recherche en Suisse. Colloque international sur les bibliothèques et archives à l'ère des humanités numériques. Archivage numérique et réseaux. (CIBAHN); 1ère édition. Tunis, 19 et 20 octobre 2016.
- Basma Makhoulf Shabou & Lydie Echernier (2016). Colloque « Archiver la recherche : responsabilités partagées ». La gouvernance du cycle de vie des données de la recherche en Suisse : Transfert & pérennisation. Université de de Montpellier, 23 juin. <http://www.archivistes.org/Archiver-la-recherche-responsabilites-partagees>
- Eliane Blumer, Pierre-Yves Burgi. Data Life-Cycle Management Project: SUC P2 2015-2018. Ressi, 2015 [http://www.ressi.ch/num16/article\\_110](http://www.ressi.ch/num16/article_110)
- European Commission. Guidelines on Data Management in Horizon 2020, 2016 [https://ec.europa.eu/research/infrastructures/index\\_en.cfm?pg=charter\\_access\\_ri](https://ec.europa.eu/research/infrastructures/index_en.cfm?pg=charter_access_ri)
- University of Geneva, DISTIC, 2016 <https://prezi.com/jwd2ilsrwruc/research-dlcm/>
- UK Data Archive « Research Data Life-Cycle », 2015 <http://www.data-archive.ac.uk/create-manage/life-cycle>
- Mackenzie Smith. Research Data Management: Practical Strategies for Information Professionals, 2014
- Nicolas Budin. Management of research data at the University of Lausanne: Analysis of needs and existing solutions, 2014
- OAIS, ISO 14 721 2012, [www.iso.org/iso/fr/home/store/catalogue\\_ics/catalogue\\_detail\\_ics.htm?cnumber=57284](http://www.iso.org/iso/fr/home/store/catalogue_ics/catalogue_detail_ics.htm?cnumber=57284)



DLCLM

Research Data  
Management Hub



***QUESTIONS?***



**DLCM**  
Research Data  
Management Hub



**Contacts:** [dlcm.ch](https://dlcm.ch)

**Basma Makhoulf-Shabou** [basma.makhoulf-shabou@hesge.ch](mailto:basma.makhoulf-shabou@hesge.ch)

University of Applied Sciences and Arts Western Switzerland